



**FOREVER SMOOTH**

.....

# **Forever Smooth**

## **Mini Keratin Straightener**

### **Care & Protection**

Innovative hair beauty treatment. Anti-frizz, long-lasting and disciplining treatments

- An innovative system to get disciplined, soft, restructured, shiny and easily manageable hair, after one application.
- It preserves the style even in very humid environment. It acts, thanks to the combination of glyoxylic acid, keratin, glycerol and Tamarind seeds; it sticks to the hair thanks to the flat iron thermal action.
- It is suitable for all hair types, natural or treated. It reduces styling times considerably.

#### **How to use:**

Treatment meant to be used in synergy with SLS free products (Rain Dance, Easy Care T Dream Repair).

- Apply on towel dried hair after washing with a SLS free shampoo. Use Rain Dance or Dream Repair Shampoo. Comb to distribute uniformly.
- Apply the product with brush and bowl. Leave for 5-10 minutes, depending on the desired anti-frizz intensity. The longer left on the hair, the straighter the hair!
- Rinse. Condition and rinse again.
- Blow dry and flat iron quickly.

**DO NOT SHAMPOO FOR 48 HOURS. DO NOT COLOR AND STRAIGHTEN HAIR ON THE SAME DAY.**

Approximately 10 applications per bottle

**LASTS FOR MULTIPLE SHAMPOOS**

**Fragrance:** Sweet scent of cherry blossoms.

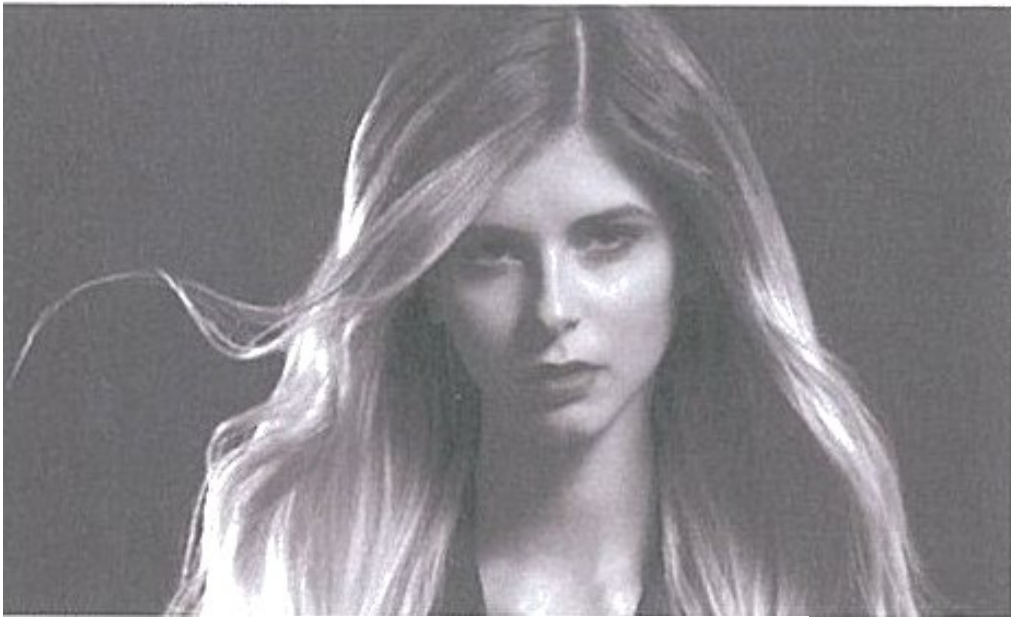
**Size:** 8.4 oz.

**Natural Ingredient:** Tamarind Fruit Seeds have a filming and moisturizing natural action, stronger than Hyaluronic acid. Their effects on the hair are: strong hydration, elasticity and thickness.

**Enriched with Macropro**



# HOW TO TOUCH YOUR STYLE



## THE MAGIC PRODUCT MIX

### THE MIX

- RAIN DANCE HYDRA SHAMPOO
- RAIN DANCE HYDRA CONDITIONER
- FOREVER SMOOTH
- SHINE BRIGHT
- PURE WAVES

### THE STEPS

1. Wash twice with RAIN DANCE HYDRA Shampoo.
2. Apply FOREVER SMOOTH Treatment on damp hair. Massage on the lengths for perfect absorption. Leave for 10 minutes.
3. Rinse accurately and condition with RAIN DANCE HYDRA Conditioner. Rinse.
4. Apply two knobs of PURE WAVES Mousse.
5. Blow dry with flat brush.
6. Create small natural waves on the lengths with a flat iron.
7. Finish with SHINE BRIGHT Spray.



The Beecher Group

